

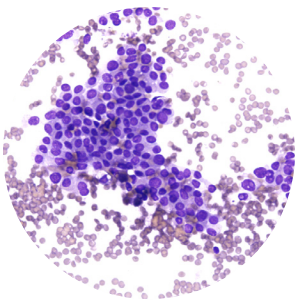
Mikrosan L5 Real-Time Telemicroscopy System

The L5 is a Class 1 remotely controlled microscope that allows you to perform traditional microscope evaluations of glass slide specimens from any network-accessible location. **This means that anything you can do with a microscope you can do with the L5.** Using a true, live feed of the glass slide, you can remotely perform primary diagnosis as well as do remote sign-out on specimens like cytology and frozen sections. The L5 is also available in our upgraded 5-20 Series line, which comes with a 20-slide autoloader for enhanced case review.

- Deliver a higher standard of care to distant and rural locations
- Enhance patient care through instant access to results and sub-specialty expertise
- Reduce costs by eliminating travel and reducing repeat surgeries



Live Telemicroscopy Applications



ROSE/OSEA/ADEQUACY

Drastically reduce fine needle aspiration (FNA) repeat procedure rates by using a remote cytopathologist to evaluate biopsies in real time.



FROZEN SECTIONS

Connect with a remote pathologist who can provide intraoperative support on frozen section and cytology samples.



REMOTE EXAMINATION

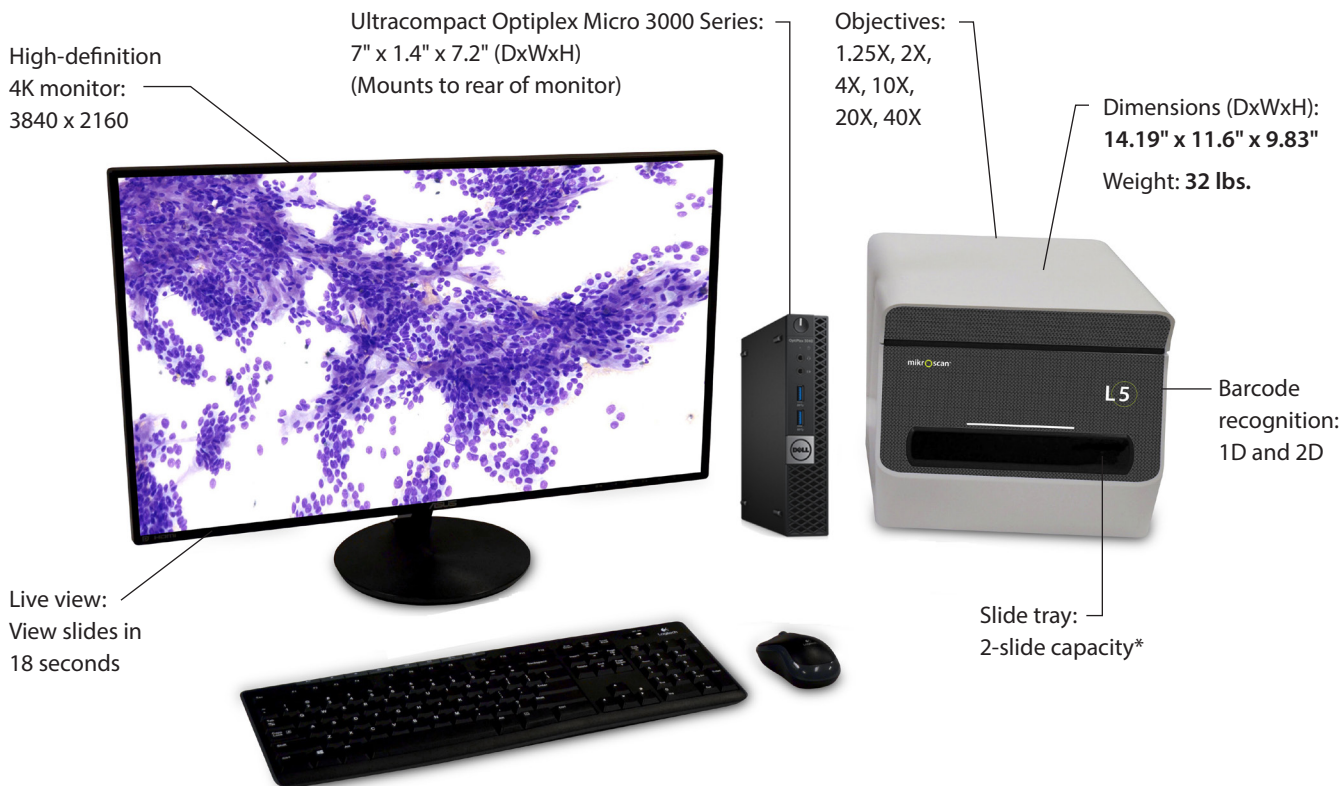
Provide subspecialty expertise through remote examination of specimens directly from the glass slide.



TUMOR BOARD SHARING

Demonstrate findings and address questions in real time via interactive review of the glass slides.

Mikroscan L5



Basic System Information

Slide Sizes	25.5 x 75.5 ± 0.5 mm (1" x 3" nominal)					
Number of Slides	1 or 2 (1" x 3")					
Number of Objective Positions: 5	Standard Configuration²					
Physical objective lens	1.25x	2x	4x	10x	20x	40x
Numerical aperture (NA)	0.04	0.06	0.10	0.3	0.50	0.75
Cover glass thickness (mm)	N/A	N/A	N/A	N/A	0.17	0.17
Digital magnification (µm/pixel)	4.14	2.58	1.29	0.518	0.259	0.129
Optical equivalent magnification (OEM) ¹	2x	4x	10x	20x	40x	80x
Measurement tool precision/accuracy (mm)	0.1 ± 0.5	0.1 ± 0.5	.01 ± .05	.01 ± .05	.01 ± .05	.001 ± .005
Image Sensor	5.0 Mp CMOS, 3.45µm pixel size					
Output Resolution (Display)	Optimized for use with the provided 3840 x 2160 pixel (4K) monitor. User selectable 1920 x 1080 pixel setting					
Device Dimensions	D: 14.19" (360 mm) x W: 11.6" (295 mm) x H: 9.83" (250 mm)					
Device Weight	32 lbs (14.5 Kg)					
Power	100-240V~, 50-60Hz, O.V. Cat II, voltage fluctuations up to ± 10%					
Supplied Computer	Dell PC with Windows 10 Pro 64 bit					

* Upgrade to 20-slide capacity with our L5-20 system.

1. Optical Equivalent Magnification is the approximate analog (optical) equivalent that would produce images with similar resolution as the listed digital magnification, which is measured in microns per pixel (µm/pixel). Reference: J Pathol Inform 2013, 1:21
2. Other objective options are available, including higher NA, non-coverslip, and higher magnification. Contact Mikroscan for details.

Contact our team for more information about Mikroscan's solutions and applications, or to schedule a live demonstration.